

30.SATRAH OLİMPİYADI MANILA 1992 (II)

BORMAN-SOYLU

Guernsey and Jersey-Türkiye-Manila 1992 1. tur

1.e4 c5 2.c3 d6 3.d4 Af6 4.Fd3 cd4 5.cd4 Ac6 6.Ae2 g6 7.Abc3 Fg7 8.0-0 0-0 9.Fe3 Ag4 10.Vd2 Ae3 11.fe3 Va5 12.Kf2 Fh6 13.Af4 e5 14.Afd5 ed4 15.b4 dc3 16.Vc3 Vd8 17.Af6 Şh8 18.Ae8 Ae5 19.Ac7 Fg7

0 - 1

IPEK-BOXALL

Guernsey and Jersey-Türkiye-Manila 1992 1.tur

1.d4 Af6 2.Af3 g6 3.Fg5 Fg7 4.Abd2 d6 5.e4 0-0 6.Fc4 Ac6 7.c3 e5 8.de5 Ae5 9.Ae5 de5 10.h3 Ve8 11.Ve2 Fe6 12.0-0 a6 13.Kad1 Ah5 14.b3 b5 15.Fe6 Ve6 16.Vf3 h6 17.Fe3 Af6 18.Kfe1 Ad7 19.Af1 f5 20.ef5 gf5 21.Vd5 Vd5 22.Kd5 Kf7 23.Ked1 Af8 24.Kc5 f4 25.Fc1 Ae6 26.Kc6 Ag5 27.Ah2 Şh7 28.c4 b4 29.Fb2 Ae4 30.Ag4 Ac3 31.Fc3 bc3 32.f3 Kd8 33.Kc1 Kd2 34.Kc3 e4 35.Kc1 e3 36.Ke6 Kfd7 37.Ke1 Ka2 38.Af6 Ff6 39.Kf6 Kdd2 40.Kf4 Kg2 41.Şh1 Kh2 42.Şg1 Khg2 43.Şh1 Kh2 44.Şg1 Kag2 45.Şf1 e2

0 - 1

KHALİFMAN-MASCARINAS

Rusya-Filipin B Manila 1992 1.tur

1.d4 d5 2.dc4 c4 3.e4 Ac6 4.Fe3 Af6 5.Ac3 e5 6.d5 Ae7 7.Fc4 Ag6 8.Af3 Fd6 9.Fb5 Ad7 10.0-0 0-0 11.Ke1 a6 12.Ff1 Af6 13.h3 b5 14.Ad2 Ae7 15.a4 b4 16.Ae2 c6 17.dc6 Ac6 18.Kc1 Aa5 19.Ag3 Fe6 20.Af5 Ff5 21.ef5 Ad5 22.Ae4 Ae3 23.Ke3 Fe7 24.Kd3 Vb6 25.f6 gf6 26.Vh5 Ve6 27.Ac5

1 - 0

ATALIK-VAGANIAN

Türkiye-Ermenistan Manila 1992 2.tur

1.d4 e6 2.c4 Af6 3.Af3 d5 4.g3 Fe7 5.Fg2 0-0 6.0-0 dc4 7.Vc2 a6 8.Vc4 b5 9.Vc2 Fb7 10.Ff4 Ac6 11.Kd1 Ab4 12.Vc1 Kc8 13.Ac3 Abd5 14.Ad5 Fd5 15.Fe3 c6 16.Ae1 Ag4 17.Ff3 Ae3 18.Ve3 Ff6 19.Va3 Ff3 20.Af3 Vb6 21.Kac1 Kfd8 22.b4 g6 23.e3 Vb7 24.Ad2 Kd5 25.Ae4 Fe7 26.Ac5 Fc5 27.Kc5 Kcd8 28.Kdc1 Kc5 29.Kc5 h5 30.h4 Kd6 31.Vc3 Vd7 32.Vc2 Şg7 33.a4 Şg8 34.Şg2 Şg7 35.Ve2 Kd5 36.ab5 Kc5 37.dc5 ab5 38.Vb2 f6 39.Vd4 Vd4 40.ed4 g5 41.Şf3 g4

1 - 2

DONGUINEZ-WILSON

Filipin C- Guernsey and Jersey Manila 1992 2. tur

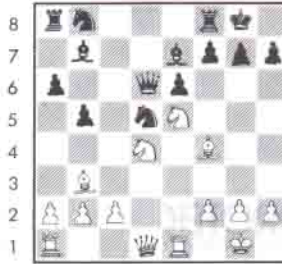
1.e4 c5 2.c3 g6 3.d4 Vb6 4.Af3 Fg7 5.Aa3 d6 6.h3 Ac6 7.Ac4 Vc7 8.Fe3 b6 9.Fd3 e5 10.Fe2 Af6 11.de5 de5 12.Ad6 Şe7 13.Ab5 Vb7 14.Vd6 Şe8 15.Ac7

1 - 0

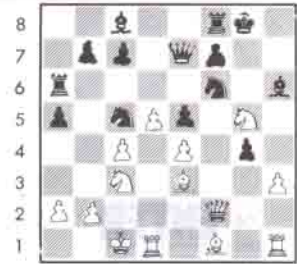
SİZ OLSAYDINIZ



I. Siyah kazanır.



II. Beyaz kazanır.



III. Siyah kazanır.

(Çözümleri 31. sayfadadır.)