

“Samatyalı” Açmazı

“Samatyalı” açmazını çözme-ye, hem diyagramlardaki oklarla hem de teklif ettiğimiz dama notasyonu ile başlıyoruz.

1.b3-b4

Beyaz 3 taş vererek siyahı damaya çıkarıyor.

1..b5xb4xc3xd2 = d1D

2.a3-b3

Beyaz, 3 taş daha vererek siyahı ikinci kez damaya çıkarıyor.

2..a5xa4xb3xc2 = c1D

3.b2-c2

Beyaz, siyah damaya 2 taş daha yediliyor.

3..c1Dxc2xc4

4.d4-d5

Beyaz, kombinezona 1 taş daha vererek devam ediyor.

4..d6xd5

5.h3-h4

Beyaz, bu kez sağ kanattan 1 taş daha vererek inisiyatifi elinde tutuyor.

5..h5xh4

6.e3-c4

Beyaz, 1 verip 4 alarak 7. sıraya yetiştiriyor.



6..e5xe4

7.f3xe3xd4xc5xb6

7..h3xg3xf2 = f1D

8.b7-b8D

Beyaz damaya çıktı. Siyah iki yerden taş üstü kaldı. Bu da beyaza büyük bir avantaj sağlıyor.

8..f5xf4

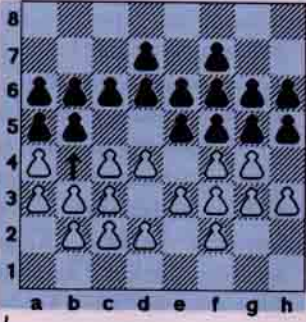
9.b8D-g8D

Matadorun son darbesi!

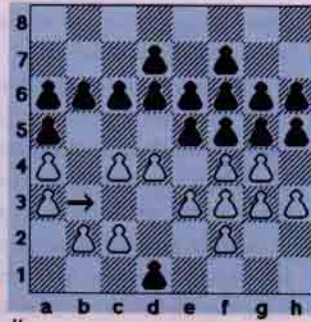
9..g5xg4

10.g8Dxg6xg3xf1xe6xf7xh6xf3xa7xd7xf6xd1xc6

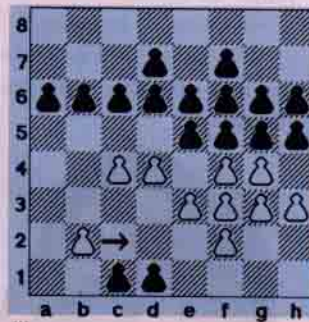
Gerçekten çok güzel bir kombinasyon



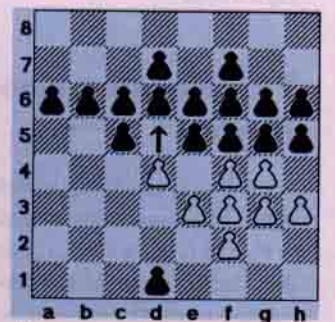
I.



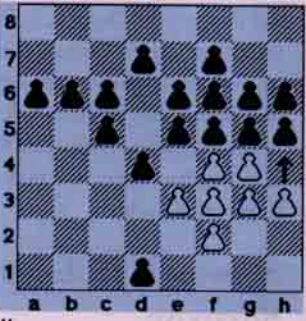
II.



III.



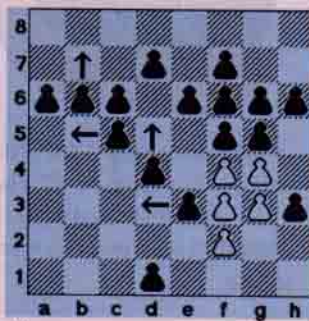
IV.



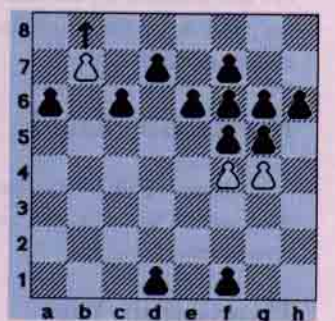
V.



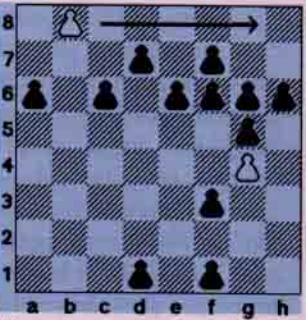
VI.



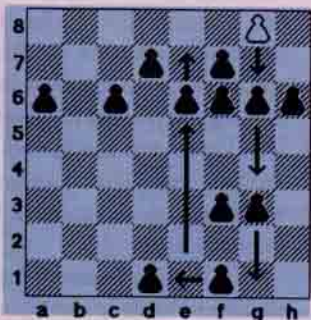
VII.



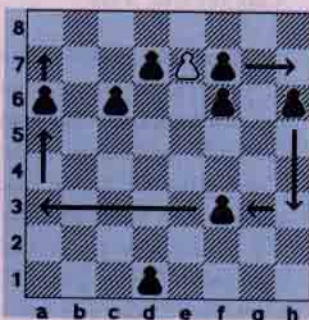
VIII.



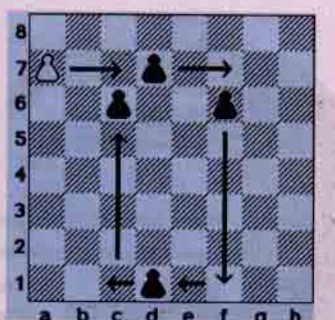
IX.



X.



XI.



XII.